

Household Hazardous Waste

What is "HHW"?

Household Hazardous Waste are chemicals which are potentially hazardous to the environment due to their toxic, corrosive, flammable or reactive properties.

Some examples include cleaning products, pesticides, pharmaceuticals, batteries, aerosol sprays, electronics, oil-based paint & more.

How are they dangerous?

If flushed down the toilet or poured down the drain, HHW materials can travel through the water cycle and contaminate our lakes, rivers and drinking water.

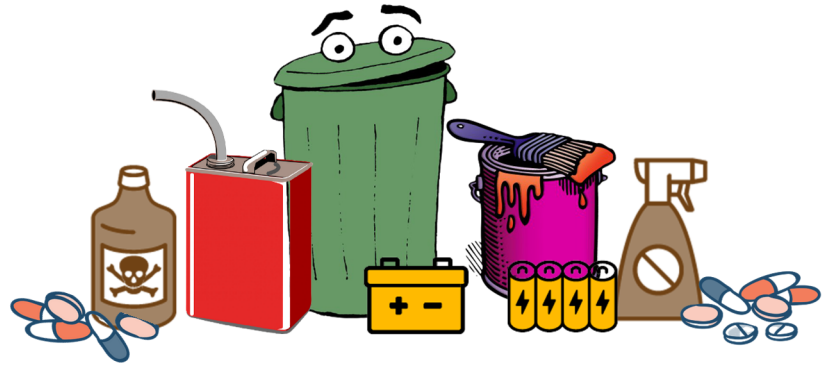
If thrown out in the trash, some materials may react with other substances inside a garbage truck or the landfill, causing fires, explosions, or other issues.

If left around the house, they can catch fire, react or explode under certain circumstances. They can also cause harm to children and pets if not disposed of properly.

Disposal Alternatives

Red Med Box for prescription disposal can be found at Family Fare, Manistee City Police, Manistee Sheriff's Office, and The Little River Band of Ottawa Indians Tribal Police Station year round.

Autozone, Advanced Auto Parts, and various other auto parts stores accept used automotive fluids (motor oil, transmission fluid, anti-freeze, brake fluid) year round.



What do I do with it?

- Never pour a hazardous chemical into a storm drain, down your sink/toilet or onto the ground.
- Never put hazardous waste with regular trash pick-up.
- Keep items in their original, labeled containers and do not mix multiple substances in one container.
- Store safely away from animals and children until they can be taken to a hazardous waste site.
- Make sure items are secured while transporting.

Tips to Reduce HHW

- Check the labels and look for words such as "warning", "cautious", "flammable", "toxic", etc.
- Only buy what you need. Share with others if you have leftover product to ensure it gets used up entirely.
- Find safe substitutes. Many household cleaners can be made from baking soda, lemon juice and other organic and/or non-toxic ingredients.

